

# Voluson E6

*Extraordinary vision*



healthymagination



imagination at work

# Your foundation for extraordinary vision.

The Voluson® E6 is the entry-level system in the Expert Series platform, providing exceptional image quality in a smart system designed to meet your daily needs.

The powerful Voluson E6 can be the cornerstone of your practice. It's designed specifically to give you the exceptional vision you need today so you have the flexibility to help meet your needs. This versatile system delivers expandable capabilities to grow with your practice.

Built on the remarkable Expert Series platform, the Voluson E6 combines advanced probe technology plus innovative hardware and software architecture. Every component works together – processing multiple data points simultaneously in real-time to deliver exceptional images. The Voluson E6 helps you to see tiny details at early stages.

#### **Building on a foundation for extraordinary vision**

Designed to grow with your practice, the Voluson E6 ultrasound system has been enhanced with innovative technology that helps improve image quality and delivers a host of automation tools to help increase exam efficiency, help improve diagnostic confidence, and expand your in-office capabilities.



# Voluson next generation volume ultrasound technologies will amaze you!

## Volume ultrasound enhancements

**Voluson second generation dynamic rendering engine** – The enhanced dynamic rendering engine and innovative probes help provide you extraordinary image quality and efficient operation.

**HDlive\*** – This Voluson second-generation rendering tool provides exceptional anatomical realism and helps increase depth perception to help enhance diagnostic confidence. This imaging capability can help you achieve a deep understanding of relational anatomy and enrich patient communication.

**Advanced Volume Contrast Imaging (VCI) with OmniView** – This tool can help improve contrast resolution and visualization of the rendered anatomy with clarity in any image plane, even when viewing irregularly shaped structures.

## Focus on image quality technology

**Speckle Reduction Imaging (SRI)** – This tool helps heighten visibility of organs and lesions with high-definition contrast resolution that suppresses speckle artifact while maintaining true tissue architecture.

**CrossXBeam<sup>CR1\*</sup>** – This technology helps enhance tissue and border differentiation with an innovative, real-time spatial compounding acquisition and processing technique.

**HD-Flow\*** – This technology uses a bi-directional Doppler feature to help achieve a sensitive vascular study and reduce overwriting.

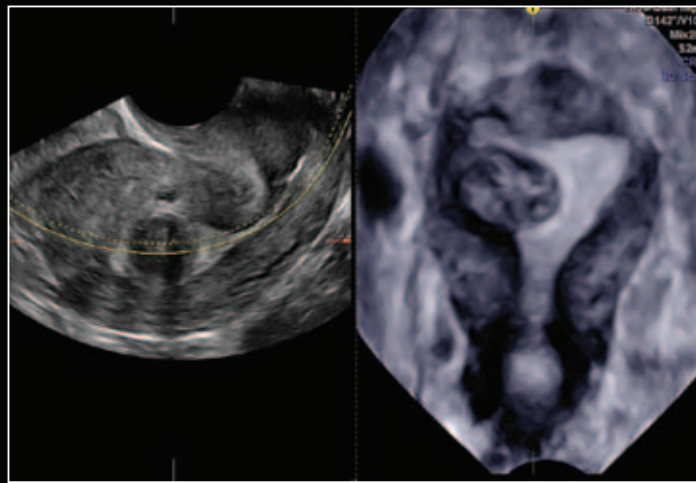
## Tools for gynecological studies

**3D HyCoSy<sup>†</sup> (Hysterosalpingo Contrast Sonography)** – An exciting tool for assessing tubal patency that helps expand your in-office capabilities, and facilitates a gynecological exam that can be comfortable for your patient.

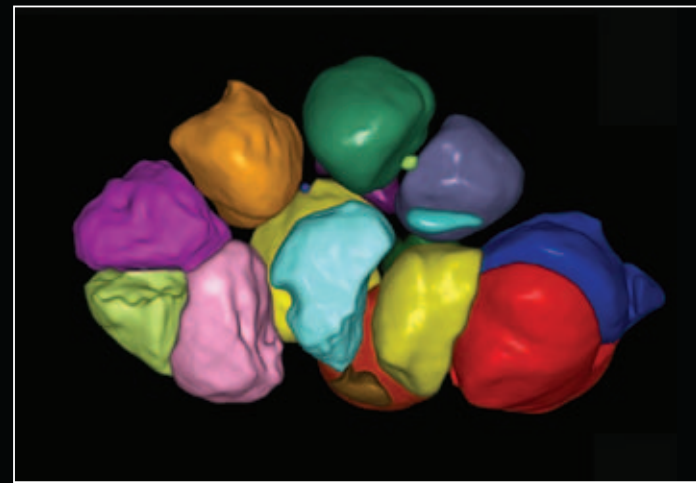
**Elastography with Elastography Analysis<sup>†</sup>** – A highly sensitive tool for women's health-care to assist in early evaluation and classification of simple and complex masses. The tool offers ratio measurement capability allowing comparison of stiffness (strain) of two regions of interest. Elastography Analysis plots the velocity information of discrete points for graphical analysis of the lesion. It is available both on the linear and endocavity probes.

Simply extraordinary  
diagnostic confidence.

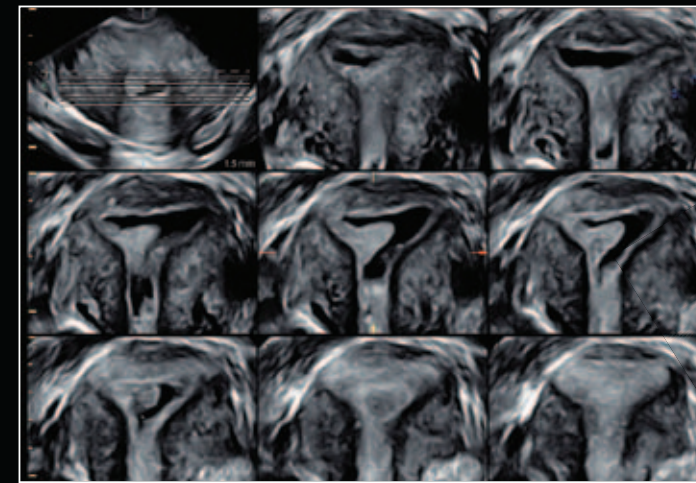




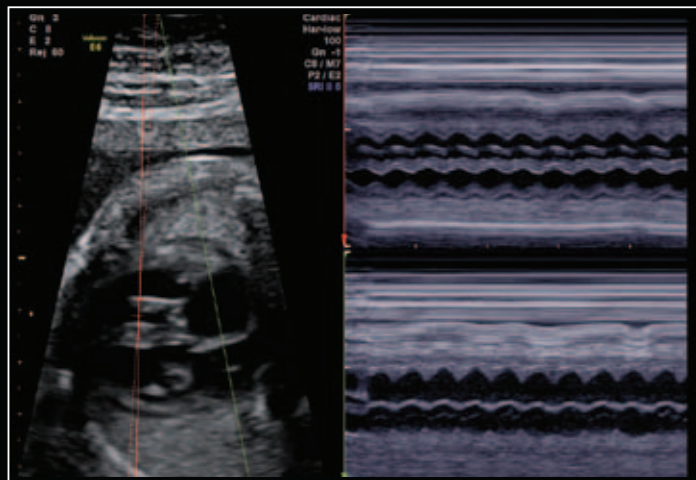
Advanced VCI with OmniView displaying fibroid in coronal view of the uterus



SonoAVC\*follicle of stimulated ovary



TUI and VCI displaying intrauterine polyp in the coronal plane



Anatomic M-Mode of fetal heart displaying tracings of both atria and ventricles



Nuchal translucency measured with SonoNT



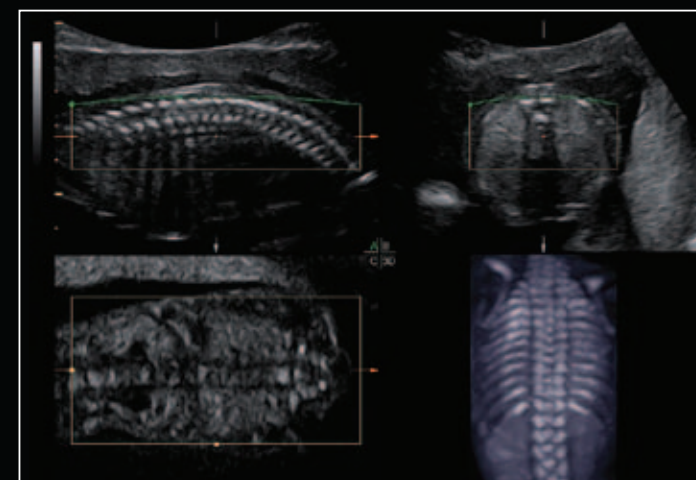
24 week fetal diaphragm with SRI



Fetal kidneys displayed with TUI



HDlive\* of a 30 week fetus to help enhance clinical confidence.



Multiplanar and rendered volume of 20 week fetal spine



## Innovations in probe technology

Extraordinary vision starts with advanced probe technology. The Voluson Expert Series supports a wide range of 2D and 3D probes, enabling quality images – especially in first trimester and complex gynecological exams.

**RAB6-D ultra-light volume probe** – User fatigue may be reduced with this next generation GE volume probe that is 40% lighter than the previous version. Its ergonomic design provides outstanding image quality in 2D and 3D/4D, features a pinless connector and sits comfortably in the clinician's hand.

**C4-8-D high frequency abdominal probe** helps provide exceptional high resolution obstetrical images during each trimester.



# Automation to help achieve more confident exams

We understand your need for exam consistency, for data that can be consistently reproduced, regardless of which staff member is performing the ultrasound exam.

So, we continue to develop automated tools that help provide assistance in complicated exams and produce results you can count on.

**SonoBiometry<sup>†</sup>** – Performs a semi-automatic measurement of the head (both head circumference and bi-parietal diameter), abdomen and femur. This tool can help enhance clinical workflow through helping reduce keystrokes to perform biometry measurements.

**SonoNT (Sonography-based Nuchal Translucency) and SonoIT<sup>†</sup> (Sonography-based Intracranial Translucency)** – Voluson technologies that help provide semi-automatic, standardized measurements of the nuchal and intracranial translucency as early as 11 weeks. Both tools can integrate easily into your workflow. SonoNT helps avoid the inter-and intra-observer variability that comes with manual measurements, and helps provide you with the reproducibility you demand.

**SonoAVC<sup>®</sup> follicle (Sonography-based Automated Volume Count follicle)** – Automatically calculates the number and volume of hypoechoic structures in a volume sweep, helping improve efficiency and workflow of follicular assessment.

**SonoVCAD<sup>®</sup> heart (Sonography-based Volume Computer Aided Display heart)** – Helps standardize image orientation of the fetal heart by providing views automatically obtained from a single volume acquisition.

**SonoVCAD<sup>®</sup> labor** – Helps evaluate second-stage labor progression, and automatically documents the labor procedure with objective ultrasound data.

## Fully-articulating arm

- Monitor turns independently of console to help improve visibility

## Adjustable console

- Height adjusts electronically to user preference
- Console “floats” and smoothly locks into place
- Console keys are right where you need them

## Easy transport

- One of the lightest and smallest premium consoles available
- Four-wheel swivel with steer and lock



## 19-inch, high-resolution flat screen monitor

- Large screen helps reduce eye fatigue
- Large image size, picture area and clipboard size helps provide visibility and clarity
- Customizable screen enables side-by-side comparisons of current and previous exam results

## Intuitive user interface

- Few keystrokes and manipulations
- 3D manipulations from trackball or rotation knobs
- Separate 3D and 4D buttons to help reduce keystrokes

In designing the Voluson E6, we were committed to keeping the clinicians who use it our priority. We envisioned a system that would be enjoyable to use on a daily basis. One that was intuitive, with customizable features to help increase user comfort. Our efforts resulted in an ergonomic system to help reduce fatigue, strain and repetitious actions. And just as important, a user-friendly system that allows you to focus more on the patient while scanning.

# Extraordinary workflow efficiency

## Innovative quality assurance tools

### ●▶ **Scan Assistant**

This innovative Expert Series feature is an easy-to-use, customizable tool that helps busy departments improve quality, increase exam consistency and increase productivity.

- User-created checklists help to avoid missed exam steps
- Customizable sub-menus help reduce annotation and measurement time
- Comprehensive exam steps and completion tracking help improve quality assurance
- Exam parameters that you define help increase consistency of exam content, from the single-user to entire department staff.

## Ease of use continues after image acquisition.

### ●▶ **ViewPoint\***

With our powerful ultrasound data management solution, you can help streamline workflow. Efficient digital connectivity gives you more freedom and flexibility, and helps improve the archiving of images, volumes and structured reports.

- Help save time and improve accuracy by transferring image and measurement data with one click
- Interface with enterprise-wide systems, such as EMR and PACS for data when and where you need it
- Quickly create reports while capturing data for later analysis. Optimize, manipulate and analyze volume ultrasound data offline to free your ultrasound system for imaging more patients
- Access robust databases to document findings



## Join the club. **VolusonClub.**

VolusonClub is an online network of Voluson ultrasound users. Inside VolusonClub you will have access to tools and resources. These materials can help you enhance your knowledge of system operation, and teach techniques to help you improve your productivity.

Among the benefits of membership are:

- Educational videos on basic and advanced topics
- Tips and tricks
- White papers about clinical benefits of Voluson technology
- Listings of tradeshow and educational courses where GE will be attending
- Information on Voluson products and upgrades
- And much more!

**Learn, Network, Share at [www.volusonclub.net](http://www.volusonclub.net).**



## We're beside you all the way.

- Excellent service and support
- Remote applications support
- In-depth, hands-on training
- On-site applications training
- Commitment to innovation and a clear upgrade path

### About GE Healthcare

GE Healthcare provides transformational medical technologies and services that are shaping a new age of patient care. Our broad expertise in medical imaging and information technologies, medical diagnostics, patient monitoring systems, drug discovery, biopharmaceutical manufacturing technologies, performance improvement and performance solutions services help our customers to deliver better care to more people around the world at a lower cost. In addition, we partner with healthcare leaders, striving to leverage the global policy change necessary to implement a successful shift to sustainable healthcare systems.

Our "healthymagination" vision for the future invites the world to join us on our journey as we continuously develop innovations focused on reducing costs, increasing access and improving quality around the world. Headquartered in the United Kingdom, GE Healthcare is a unit of General Electric Company (NYSE: GE). Worldwide, GE Healthcare employees are committed to serving healthcare professionals and their patients in more than 100 countries. For more information about GE Healthcare, visit our website at [www.gehealthcare.com](http://www.gehealthcare.com).

GE Healthcare  
9900 Innovation Drive  
Wauwatosa, WI 53226  
U.S.A.



### Environmentally responsible for future generations.

The Voluson Expert Series ultrasound systems are among the most energy-efficient in the industry. That means with every image you'll be using less energy, saving money and contributing to a better environment. It's part of the GE commitment to invest in innovative solutions to environmental challenges while empowering you with advanced tools for healthcare delivery.

### A focus on improving healthcare

Better care for more people. Healthymagination is our commitment to continuously develop innovations focused on reducing cost, increasing access and improving quality of patient care. Voluson's suite of automated technologies are Healthymagination validated. This validation helps ensure that clinicians will not only reduce costs through improved efficiencies, but may also increase quality of care through standardization and ease of automation.

***†Not for sale in the USA.  
Not approved or cleared by the U.S. FDA.***

©2012 General Electric Company – All rights reserved.

General Electric Company reserves the right to make changes in specifications and features shown herein, or discontinue the product described at any time without notice or obligation. Contact your GE Representative for the most current information.

GE and GE Monogram are trademarks of General Electric Company.

GE Medical Systems Ultrasound & Primary Care Diagnostics, LLC, a General Electric company, doing business as GE Healthcare.

\* Trademark of General Electric Company.

DOC1212798